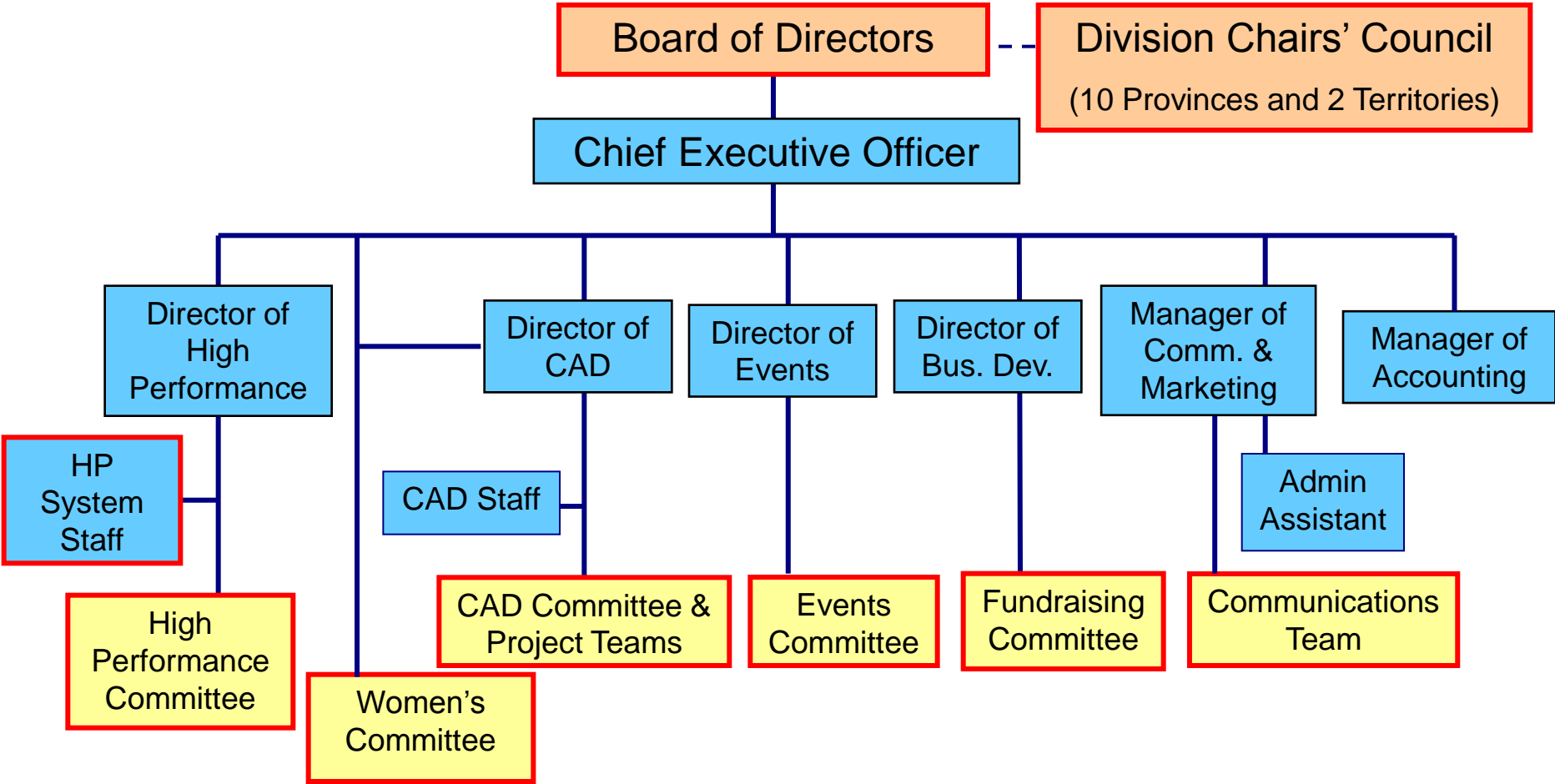


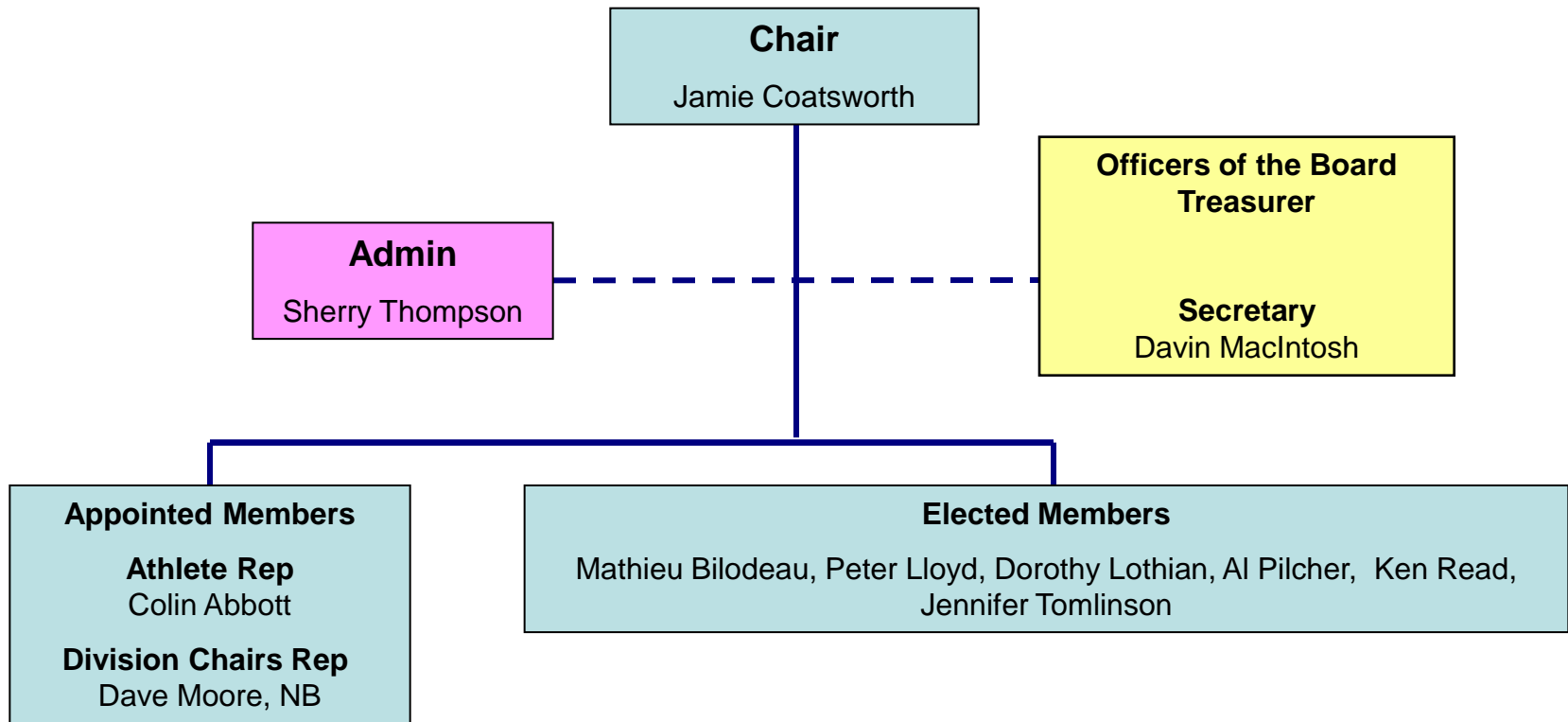
CROSS COUNTRY CANADA Volunteer Structures & Staff

Revised Nov 2014

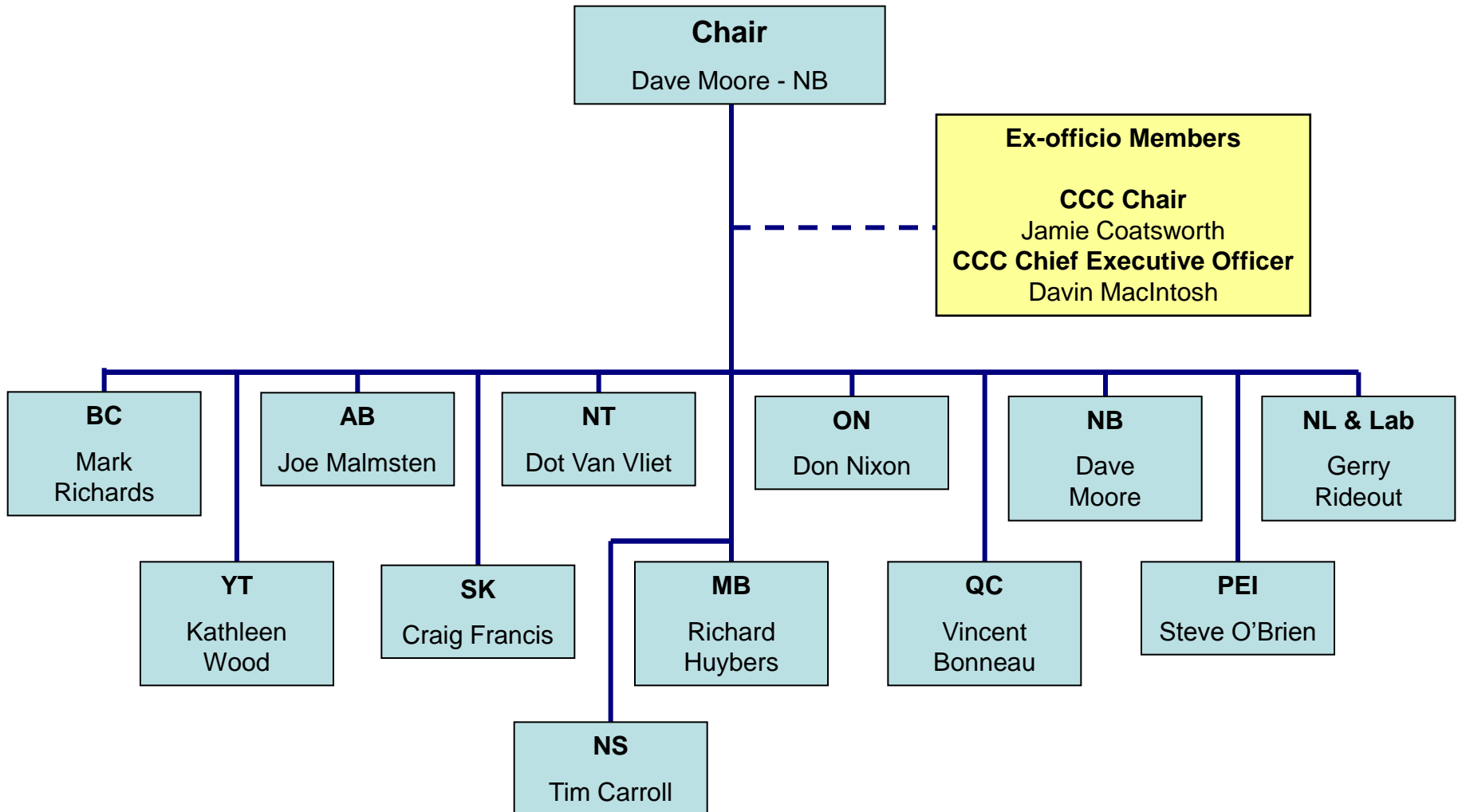


N.B. Elements with red frames link to further details

CCC Board of Directors 2014-15



CCC Division Chairs Council (DCC) 2014-15



HP (NST)System 2014-15

CCC Board of Directors

Chief Executive
Officer

Director of
High Performance
Thomas Holland

High
Performance
Committee

HP Coord.
Admin.
Susan Gudwer

National Development
Centres

Trg. Centre
Boards

Regional
CSIs

NST HEAD COACH
Justin Wadsworth

IST
CSI
Calgary/Montreal

AWCA

T-BAY

CNEPH

WC Team
Coach: WC
Tor-Arne
Hetland

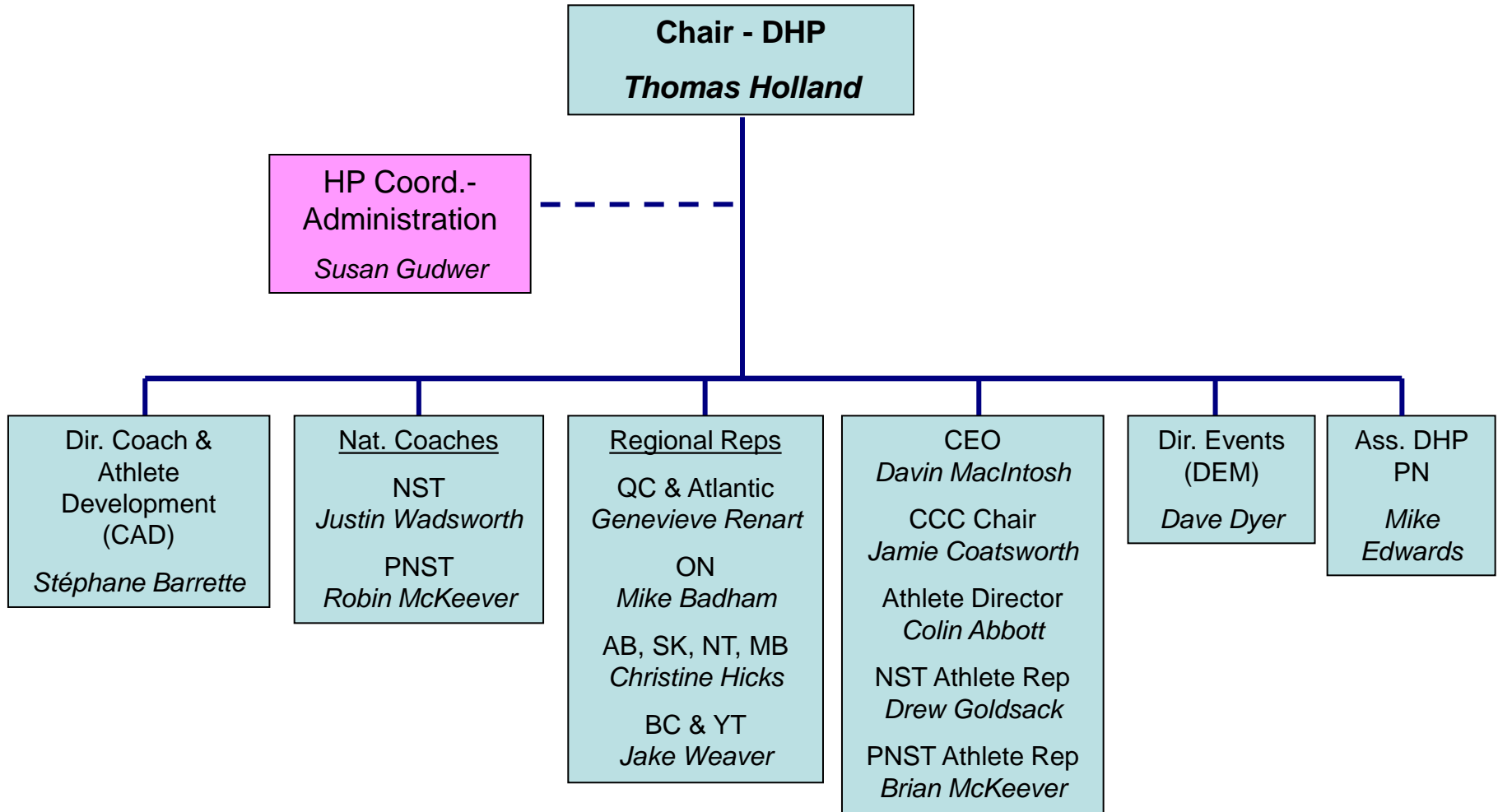
WC Team
Coach
Louis
Bouchard

Head
Technician
Yves Bilodeau

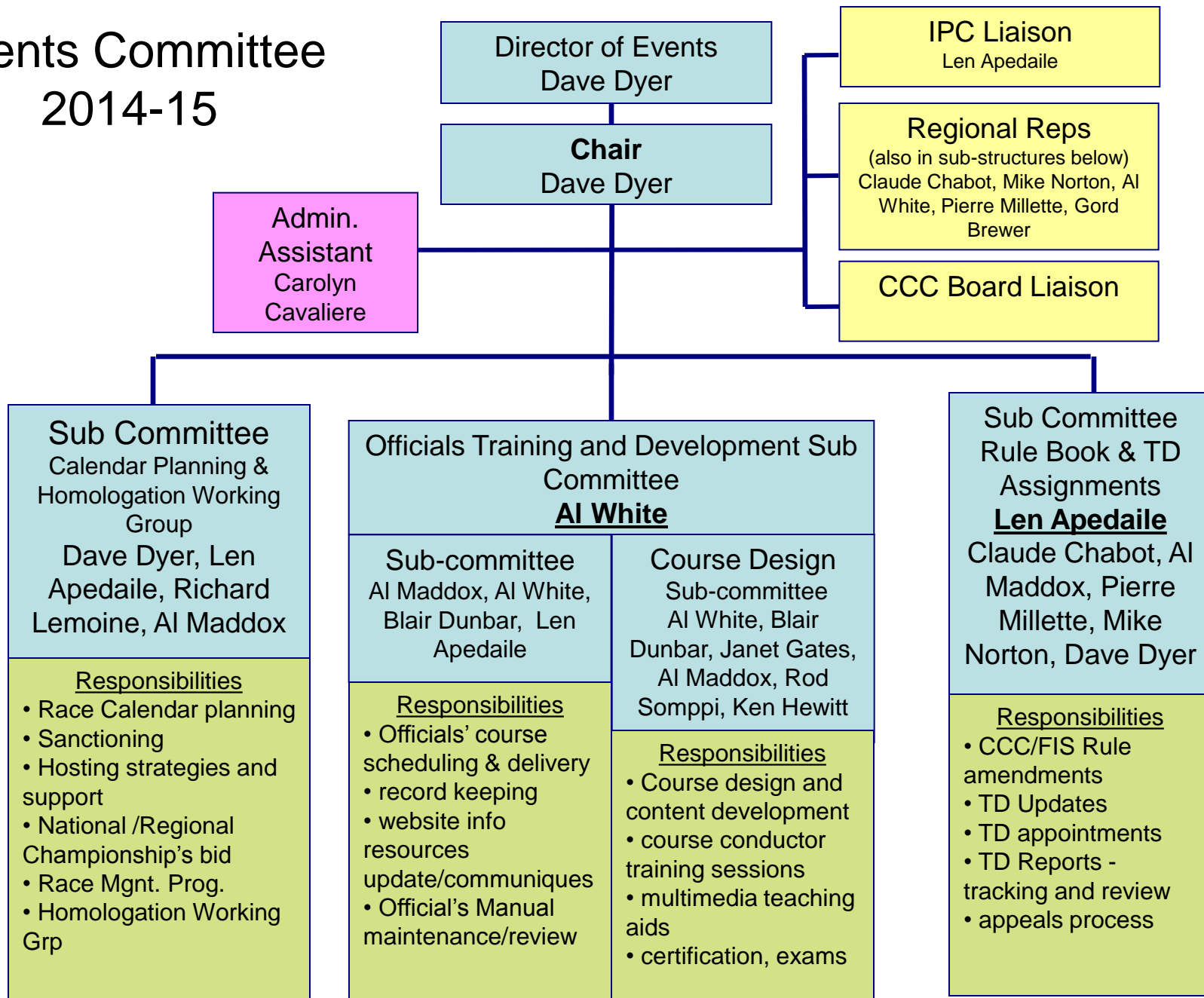
Tech Support
Coordinator
Joel Jaques

Seasonal Technicians
(5)

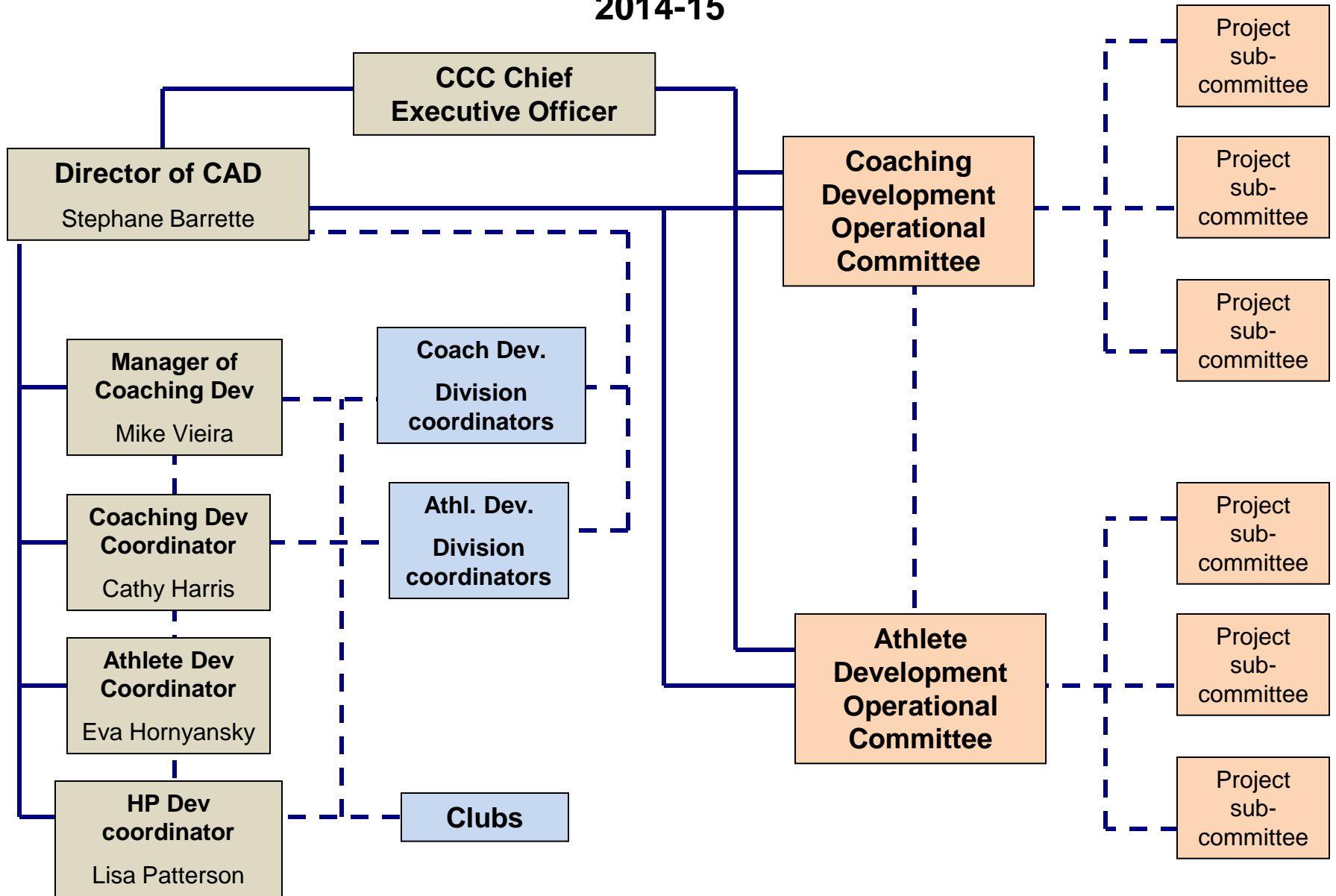
High Performance Committee 2014-15



Events Committee 2014-15



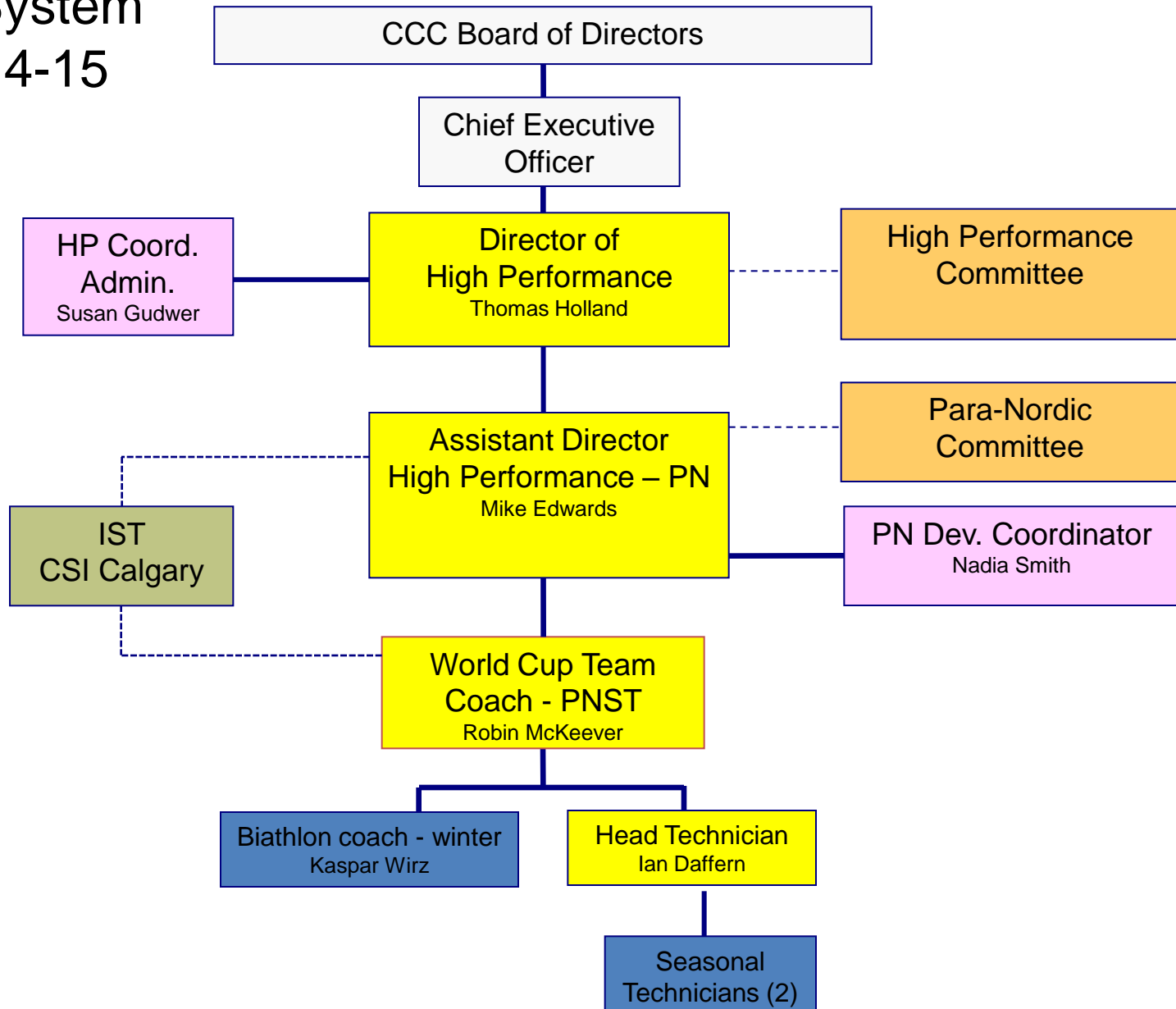
Coach and Athlete Development 2014-15



— Authority and working relationship

- - - Working relationship

PN System 2014-15

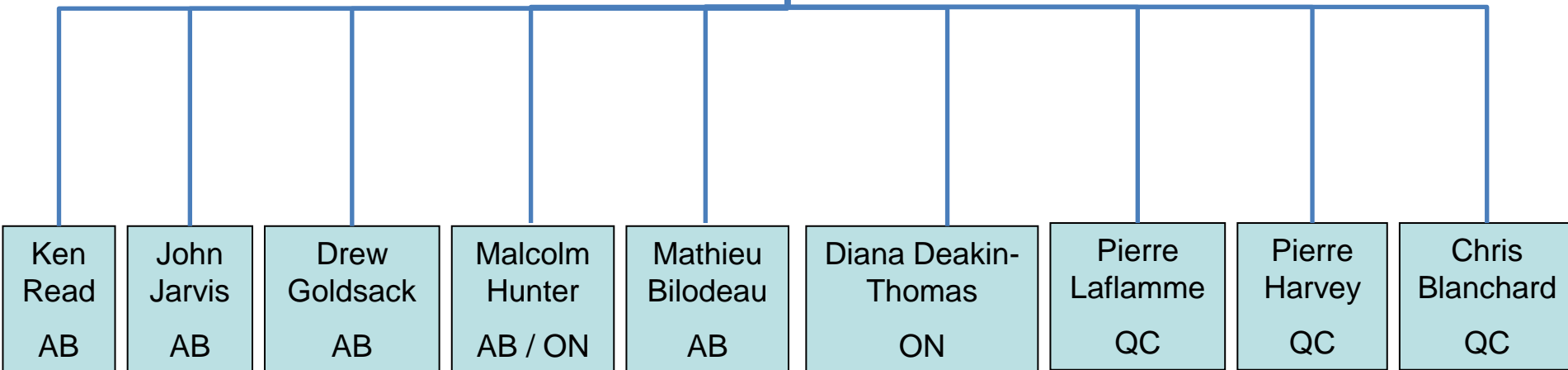


CCC Fundraising Committee 2014-15

Chair
Matthew Jeffries
CCC Director of
Business Development

CCC Executive
& Staff Liaisons
Davin MacIntosh
Martine Zilligen

CCC Board Liaison
Jamie Coatsworth



Women's Committee 2014-15

